



Funded by
the European Union



GLOBAL COVENANT
of MAYORS for
CLIMATE & ENERGY
THE CARIBBEAN

GLOBAL COVENANT *of MAYORS for* CLIMATE & ENERGY **THE CARIBBEAN**

Visual Identity Manual

Table of contents

<u>About</u>	3	<u>Logo versions</u>	7
<u>Logo Composition</u>	4	<u>Colours</u>	8
<u>Clear Space</u>	5	<u>Tipography</u>	9
<u>Co-branding</u>	6	<u>Incorrect logo use</u>	10

About

The **Global Covenant of Mayors for Climate and Energy** is the **world's largest global alliance of municipalities and cities** committed to leading the **fight against climate change** and promoting **sustainable energy**.

Our mission is to **drive resilience** in the face of climate challenges, **reduce carbon**

emissions, and ensure **equitable access** to sustainable energy.

Currently, GCoM is built upon the commitment of more than **13,000 cities and local governments from over 140 countries on six continents**. Together, they represent a population of **over one billion people**.

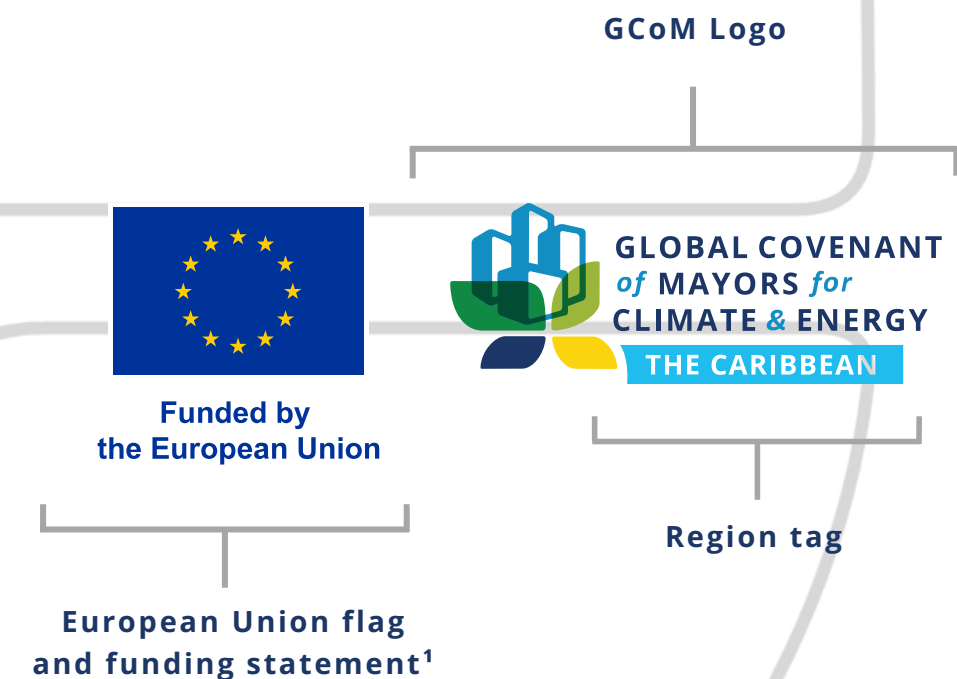
3

Logo composition

Horizontal



Vertical

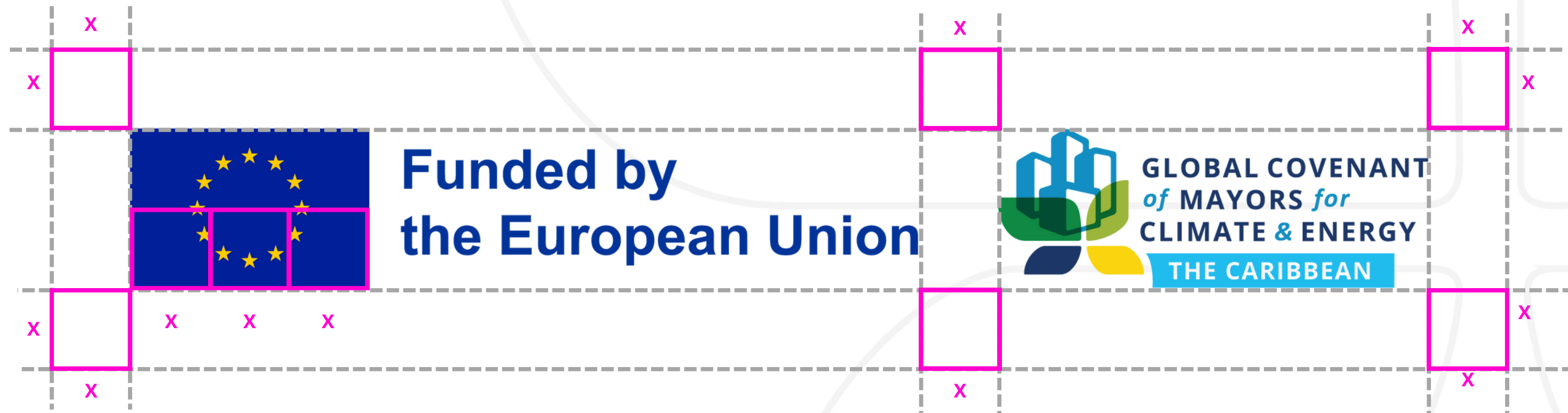


¹ The logo of the Global Covenant of Mayors **should always be used with the emblem of the European Union and the funding statement**. If you have any doubts about the use of the European Union emblem, you can check [here](#).

! We highly recommend the **preferential use of the horizontal version of the logo**. All usage guidelines and available color versions apply to both formats.

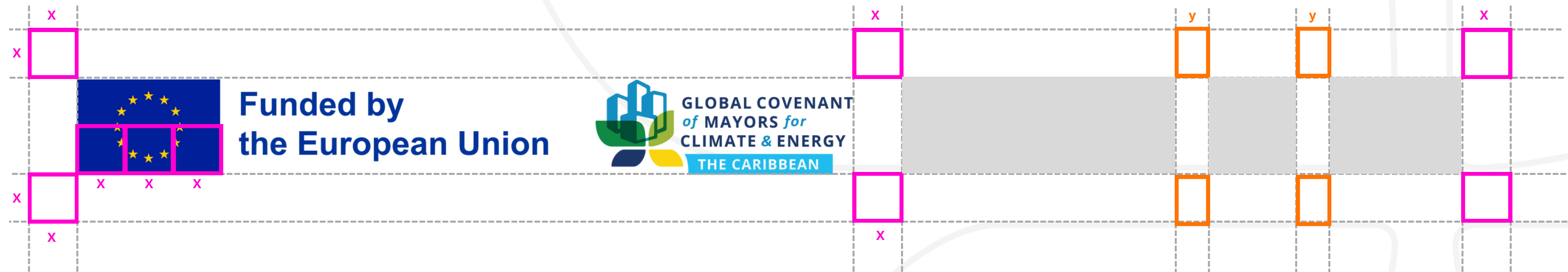
Clear space

There should be a **clear space** around the **GCoM logo**, where **no graphic elements** should be added. This space is determined by **X**: **one-third of the width of the European Union emblem**.



Co-branding

The GCoM logo may be placed in any position. **The height of the other logos must not exceed the height of the European Union flag.** A clear space should be kept around the logos, which is determined by one-third of the width of the European Union flag. **The use of horizontal logos should be prioritised.** If there is more than one logo to lay out, they must be at a uniform distance from each other (Y).



Logo versions

Colour

Light backgrounds



Dark or complex backgrounds



One colour

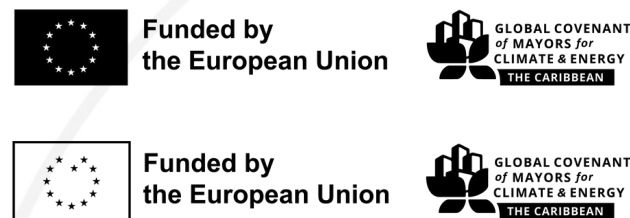
European Union Blue



White



Black



Colours



GCoM Dark Blue

#1C3767

C: 100 | M: 83 | Y: 31 | K: 20

R: 28 | G: 55 | B: 103



GCoM Light Green

#9BB63B

C: 47 | M: 11 | Y: 91 | K: 01

R: 155 | G: 182 | B: 59



GCoM Light Blue

#138EEE

C: 80 | M: 30 | Y: 09 | K: 01

R: 19 | G: 142 | B: 194



GCoM Dark Green

#0F8943

C: 85 | M: 20 | Y: 93 | K: 05

R: 15 | G: 137 | B: 67



GCoM Yellow

#FAD50F

C: 04 | M: 13 | Y: 92 | K: 00

R: 250 | G: 213 | B: 15



GCoM LATAM Turquoise

#20BCEE

C: 69 | M: 0 | Y: 1 | K: 0

R: 32 | G: 188 | B: 238



Tipography

The GCoM Americas visual identity of GCoM Americas **uses the Open Sans family**, and its variations in weight. The Regular, Italic and Bold variations should be favoured.

Titles

You should use **Open Sans Bold** or **Extrabold**.

Text Body

You should use **Open Sans Regular** or **Medium** to facilitate reading.

Example

Cities contain **more than half of the world's population**, and they **consume more than two-thirds of the world's energy**. Local leaders across the globe are pursuing **ambitious climate initiatives** in their communities. They are key to **delivering on the Paris Agreement**. All levels of government – cities, regions, and nations – have a role to play when it comes to working hand-in-hand with the scientific community, financial institutions, and the private sector. Only through **dynamic, multi-level collaboration** can we reach a **net-zero-emission world by 2050. Together, we are unstoppable.**



Incorrect logo usage

Don't change fonts or colours



Don't use shadows or any other effect



Don't use the GCoM Americas logo without the region tag



Don't rotate or change the proportion between elements



Don't use the GCoM logo alone, without the European Union flag.



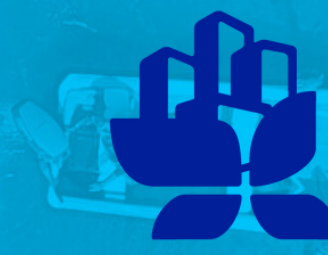
Do not reduce the logo to a height smaller than 1cm



10



Funded by
the European Union



GLOBAL COVENANT
of MAYORS for
CLIMATE & ENERGY
THE CARIBBEAN

All uses of the logo must be approved by the Global
Covenant of Mayors Secretariat. If you have any questions,
please contact support@globalcovenant-caribbean.org